

# BOBINA 11,4W/m E

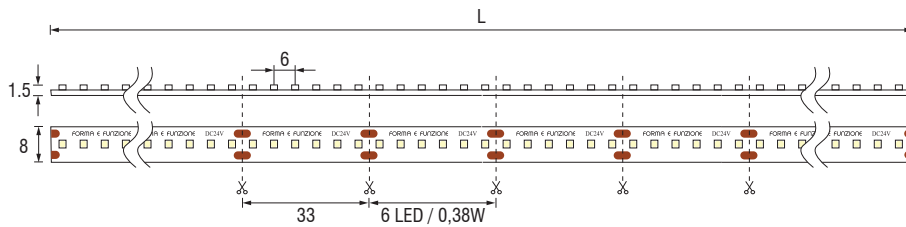
LED 24V - 57W (5m x 11,4W/m)

- IT** Bobina LED adesiva - Sezionabile. Si consiglia l'applicazione su materiali ad alta conduzione termica (es. alluminio).
- EN** Adhesive LED Reel - Cuttable Application on high heat conductivity (ex.aluminium) materials is recommended.
- DE** Selbstklebendes LED-Band - Kuerzbar Anwendung mit waermeleitfaehigen Werkstoffen (z.B. Aluminium) wird empfohlen.



75-82 lm/W PHOTOBIOLOGICAL CLASS 0 CRI > 90

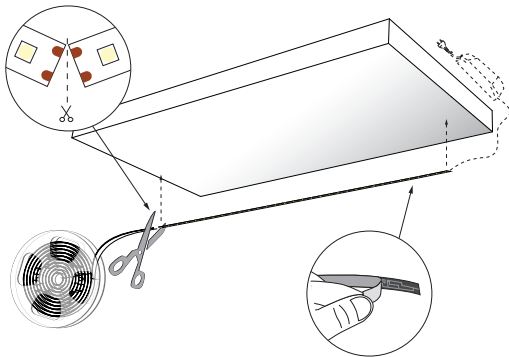
CE ENEC EMC



CONNECTION SYSTEM



Saldatura / Welding / Loeten



L	3000 K		4000 K	
	Codice - Part no. - Artikel-Nr.	EEC	Codice - Part no. - Artikel-Nr.	EEC
5000	5L543C	A+	5L543	A+

BOBINA / REEL 1000mm LED 24V-11,4W/m E		LUX 3000K 4000K
mm	90°	
250	Ø 700	1500 1650
500	Ø 1450	550 610
750	Ø 2200	250 300
1000	Ø 2950	170 190

Dimensioni in millimetri (mm) / Dimensions in Millimeters (mm) / Dimensionen in Millimetern (mm)  
Alimentatore non incluso / Driver not included / LED-Konverter nicht inbegriffen